

*Let people live so that the state may live  
Sheikh Edebali*



2019

**INFORMATICS  
SECURITY  
TECHNOLOGIES**

adorel.com.tr

DESIGN +  
PROJECT +  
IDEA

We add plus value.



**The right symbol** of technology.

ADOREL, is an expert company providing services in the field of “information and security technologies”, supporting by wide reference groups in different parts of the world, with its 25 years of industry experience.

## *What do we do?*

3

- :: City Surveillance and Monitoring (MOBESE) Technologies
- :: Security Camera Systems
- :: Walk Through Metal Detectors and Vehicle X-ray Devices
- :: X-Ray Devices
- :: Wireless Audible Lightened Emergency Warning System
- :: Early Warning and Security Technologies for Borders
- :: Call Systems
- :: Fingerprint Control System
- :: Face Recognition Control System
- :: Barrier Access Control System
- :: Software Solutions





# CITY SURVEILLANCE AND MONITORING (MOBESE) TECHNOLOGIES

[adorel.com.tr](http://adorel.com.tr)

# CITY SURVEILLANCE AND MONITORING (MOBESE) TECHNOLOGIES



The city monitoring system consists of camera systems placed in places known as the transit route where people are densely populated and the images taken from these cameras are continuously transferred to the center and recorded.

It provides important benefits in determining the magnitude of the events and live monitoring the developments that may take place in cities and directing the security forces to the scene according to the magnitude of the event.

The city monitoring system is also useful for public security services.

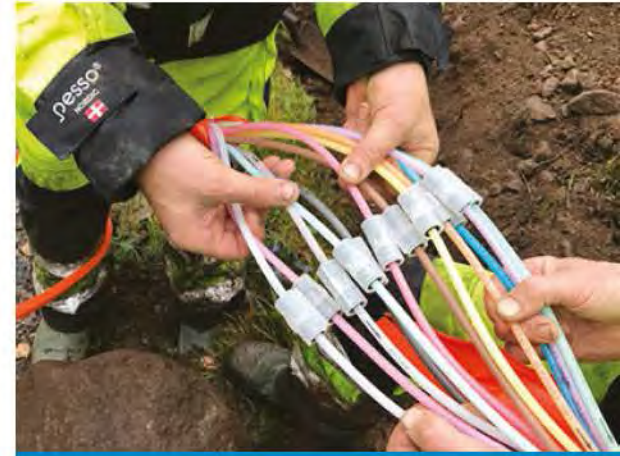




7



# CITY SURVEILLANCE AND MONITORING (MOBESE) TECHNOLOGIES



## Key Features of MOBESE

Analysis of events on digital map

Ability to make advanced database queries

Easy and encrypted messaging

Easy and effective team coordination

Easy and accurate staff performance

To be able to evaluate

Being a smart system

Resim transferi yapabilme







### Areas of Application of License Plate Recognition System

- Entry and Exit Points of Highway
- Bridges and Toll Booths
- Border Gates
- Highway Control Points
- Parking lots
- Airports
- Main Entrance of Barracks
- Warehouses and Storehouses

## Plate Recognition System

In addition to the city center and busy streets of the region where it was established, it is also a very effective solution for traffic control and vehicle tracking with cameras placed at the junction points at the entrance and exit points of the region.

With the creation of the infrastructure, Mobese keeps a record as image of all vehicles passing through junction points and even reads the license plates of all vehicles passing through junction points and writes them to the database.

If the stolen vehicle's plate is defined to the system, if the stolen vehicle passes through the junction, the system warns the command center and ensures that criminals are caught.



# AUTOMATION SOLUTIONS

- :: **Wireless Audible Lightened Emergency Warning System**
- :: **Emergency Warning and Security Technologies for Borders**
- :: **Call Systems**

[adorel.com.tr](http://adorel.com.tr)

# EMERGENCY WARNING AND SECURITY TECHNOLOGIES FOR BORDERS

Due to its wireless and video analytic system, Border security is a border early warning and security system designed for large-scale areas that would like to be controlled by monitoring stations. With wireless border early warning system, different production and system installations are made according to each project apart from the usual solutions.

With the help of the diversity of our border early warning system, it is possible to control large areas with few products. In the border early warning system, we have solutions for pitch dark, rainy, snowy, extremely sunny and cloudy environments.

We have developed systems to suit the different needs of the market by providing solutions with a video analytic system that can work with IP or thermal imagers. The wireless border early warning system has a very simple interface for use. Remote maintenance and central monitoring station are equipped with the latest technologies for quick communication and proper system operation.



**AUTOMATION  
SOLUTIONS**

[adorel.com.tr](http://adorel.com.tr)

 **adorel**  
bilgi : güvenlik teknolojileri





# WIRELESS CALL SYSTEMS

Smart Wireless Call Systems are wireless call management systems used in indoor and outdoor areas. In the absence of electrical infrastructure, the system operation will be ensured without interruption by using solar panels, batteries or different energy solutions.

The system is an extremely reliable system that provides emergency calls in all areas such as military institutions, mining sites, airports, campuses, border troops etc. that require wireless calls and ease of communication in the absence of communication.

ADOREL provides all kinds of information and solutions for projects related to wireless call systems.

All institutions and organizations in particular defense industry, border posts, security associations that incorporate the ADOREL Wireless Border Early Warning System have seen the importance that this technology adds to them and receive their results in the most effective way.



## AUTOMATION SOLUTIONS



# WIRELESS AUDIBLE LIGHTENED EMERGENCY WARNING SYSTEM

Akeus (Intelligent Wireless Emergency Warning System); is an important computer-controlled security practice which designed and produced by Adorel to meet the needs of dams and open areas while providing wireless communication with RF signals.



**AUTOMATION  
SOLUTIONS**

[adorel.com.tr](http://adorel.com.tr)

 **adorel**  
bilgi :: güvenlik teknolojileri

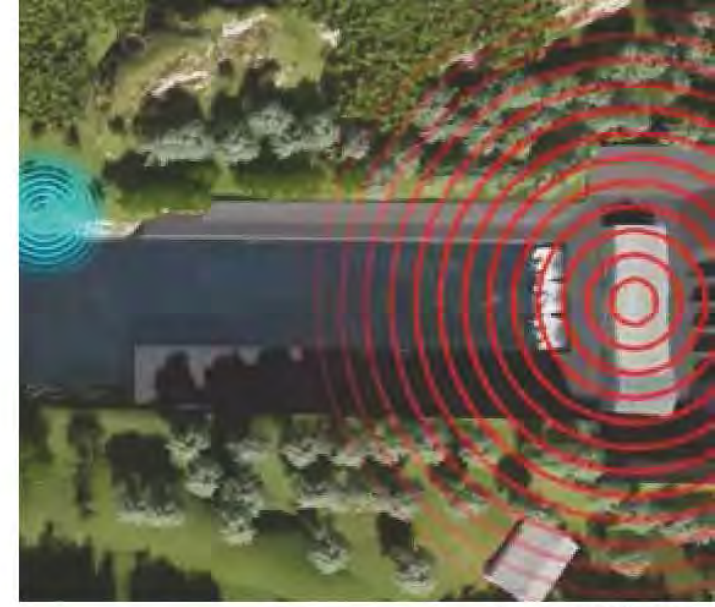


## Properties of Wireless Audible Lightened Early Warning System

The Wireless Early Warning System at dams and HEPPs is resistant to the external factors (rain, snow, dust, sun). It provides miles of distance communication without distance limitation. System can operate for 15-20 days without interruption in case of solar panel problems. Text announcements can be made for announcements and different types of announcements can be integrated into the system. It is repeating signal transmission while sending data to ensure that there is no disruption in system operation. Wireless camera system can also be integrated into the system.

The following tests are performed before the Wireless Audible Lightened Early Warning System is activated.

AKEUS receiver communication, Battery voltage value information received and operating status, whether the Solar panel works correctly, information about whether the speaker gives an audible warning, information about whether the visual led lamp flashes, the information of the internal temperature of the system box tests are performed. The system continues to operate even if there is one or more units or modules that do not work as a result of the test.



15







# ELECTRONIC SECURITY TECHNOLOGIES

- :: Security Camera Systems
- :: Walk Through Metal Detector and Vehicle X-ray Devices
- :: X-ray Devices

[adorel.com.tr](http://adorel.com.tr)

# SECURITY CAMERA SYSTEMS

Security cameras are closed circuit television systems and are able to monitor and record security 24/7 uninterrupted and remotely as mobile.

When most people think about why a camera system is necessary, they only consider crime images.

This is, of course, a very important benefit for the area where camera systems are used, but it is not just limited to this benefit.

However, research has shown that loss of time in the company creates more material damage than robberies. Theft of assets that appear to be material constitutes very few of the issues mentioned here. Inattention, indifference to customers, and fail to timely entry and exit issues can create much more than material losses.



**ELECTRONIC  
SECURITY  
TECHNOLOGIES**

[adorel.com.tr](http://adorel.com.tr)

Closed circuit television system usage areas can be varied as Facility environmental monitoring security camera systems, Workplace security camera monitoring systems, Home camera systems and factory security camera systems etc. City monitoring systems, as KYGS mobese systems, security camera systems have many uses today.



# XRAY SECURITY SOLUTIONS

## **ADOREL;**

**With more than 25 years of experience in modern technological substructure, professional software and hardware experiences to lead the first always adopting the principle of stable development. The first day continues with excitement.**

**ADOREL aims in the sector with both research and development structure and active projects solutions it offers every day which has achieved success.**

**ADOREL provide services of Turkey's various points "informatics and security" in the field of technological services.**



# VEHICLE SCANNER



**Our device is suitable to use in Highways, airport entrances and big site entrances. It is easy operate and It has designed with high imaging technology.**

**LEMA VS 1000**  
EXPEDITION • MODERNITY • ACTION





Technical Support 7/24  
Professional Service  
Expert Personnel  
Fast Spare Part Supply

➤ **Transit security priority centers such as customs, airport, border security;**

all kinds of civilian vehicle and military vehicle access control will have successful results with professional equipment and trained personnel with the quality and assurance of on-site testing and applications, With **ADOREL** quality and assurance, on-site testing and applications will get successful results.

Airports  
Customs  
Seaports  
Metro and Train Stations  
ShoppingMalls  
MilitaryandPoliceCenters  
GovernmentBuildings  
Courthouses  
Prisons  
Cargo Companies



**LEMA VS 1000**



$$T = 2\pi \sqrt{\frac{r^3}{GM}}$$
$$\mu = G \times M$$

$$T = 2\pi \sqrt{\frac{149,597,887^3}{32,712,440,000}}$$

$$T = 2\pi (5022643.73)$$

$$T = 31558201.33 \text{ sec}$$

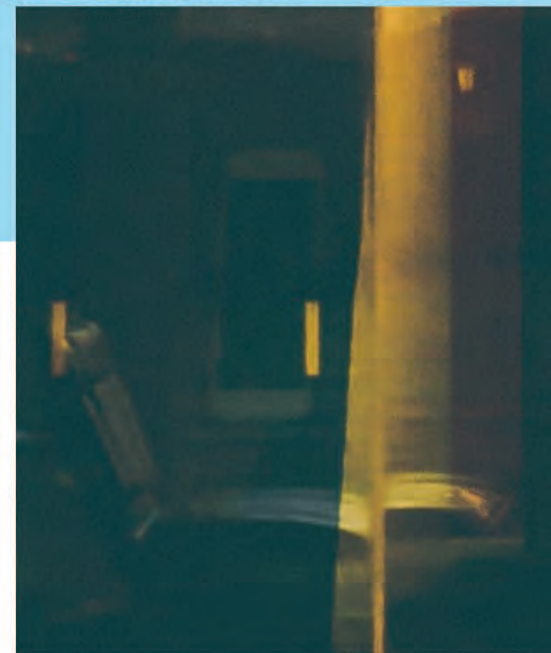
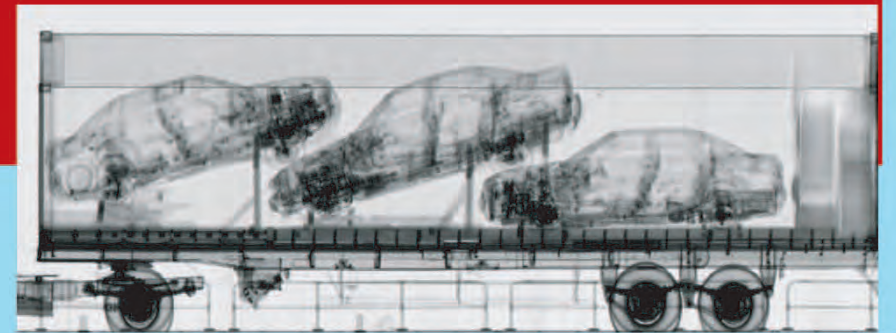
$$31558201.33 \text{ s} \times \frac{1 \text{ minute}}{60 \text{ seconds}} = 525,970 \text{ min}$$

$$525,970 \times \frac{1 \text{ hour}}{60 \text{ minutes}} \times \frac{1 \text{ day}}{24 \text{ hours}} \approx 36 \text{ days}$$

# LEMA CS2000

EXPEDITION ♦ MODERNITY ♦ ACTION

## CONTAINER SCANNER



Our device is suitable to use in Highways, airport entrances and big site entrances. It is easy to operate and it has been designed with high imaging technology.





Technical Support 7/24  
Professional Service  
Expert Personnel  
Fast Spare Part Supply



➤ Operation of the software, hardware and staff assignment of all kind x-ray scanning professional devices is being carried out by ADOREL for loaded or unloaded heavy load trucks, **long and wide vehicles in border crossings and ports in which secure access control is important.**

Airports  
Customs  
Seaports  
Metro and Train Stations  
ShoppingMalls  
MilitaryandPoliceCenters  
GovernmentBuildings  
Courthouses  
Prisons  
Cargo Companies



[www.adorel.com.tr](http://www.adorel.com.tr)

EXPEDITION • MODERNITY • ACTION



# LEMA BS2000T



## BAGGAGE SCANNER



Our device is suitable to use in Highways, airport entrances and big site entrances. It is easy operate and it has designed with high imaging technology.



Airports  
Customs  
Seaports  
Metro and Train Stations  
ShoppingMalls  
MilitaryandPoliceCenters  
GovernmentBuildings  
Courthouses  
Prisons  
Cargo Companies



## It is now much more professionalized by ADOREL,

experience both to position X-Ray platform, and to provide time-friendly, high level secure and regular pass at all entrances and exits where people-oriented controlling is managed.

Technical Support 7/24  
Professional Service  
Expert Personnel  
Fast Spare Part Supply



# LEMA BS 2000T

[www.adorel.com.tr](http://www.adorel.com.tr)

EXPEDITION ♦ MODERNITY ♦ ACTION



# LEMA BBS3000T

EXPEDITION • MODERNITY • ACTION



## BIG BAGGAGE SCANNER

Devices are equipped with advanced material level and perfect image quality owing to unlimited working ergonomics, reliability and safety. Our device steps forward with ergonomic design for a better, efficient and Professional x-ray scan. ADOREL uses International Branded Components.



Technical Support 7/24  
Professional Service  
Expert Personnel  
Fast Spare Part Supply



Airports  
Customs  
Seaports  
Metro and Train Stations  
ShoppingMalls  
MilitaryandPoliceCenters  
GovernmentBuildings  
Courthouses  
Prisons  
Cargo Companies



## Big Cargoes are not a problem!

Whatever the cargo size will be, all kinds of technical solution, technological infrastructure and supply of hardware are carried to the fields by the experience of ADOREL.



[www.adorel.com.tr](http://www.adorel.com.tr)

EXPEDITION ♦ MODERNITY ♦ ACTION

CE

ISO  
9001:2015

# LEMA WD 650C

EXPEDITION • MODERNITY • ACTION



## ➤ WALK-THROUGH METAL DETECTOR



Technical Support 7/24  
Professional Service  
Expert Personnel  
Fast Spare Part Supply



### We greet our guests first!

The door-type metal detector detects the metal intensity on people who pass through it and signals with light and sound. So, it will prevent people entering in with imminently hazardous substances such as weapons, knives and makes you feel the quality of the hardware of ADOREL.



# X-RAY DEVICES

X-ray devices are usually used to determine whether a safety-threatening object such as weapon, knife or bomb is carried, by viewing the inside of bags, packages, suitcases, boxes, envelopes etc.

It is used to ensure the security of areas such as airports, public buildings, military organizations, shopping malls, business centers, factories and similar critical areas where people move collectively. X-ray devices are classified according to their tunnel dimensions.

X-ray devices are capable of very high resolution and they can separate organic inorganic substances and detect drugs.

X-ray devices detect predefined objects such as knives, weapons, bombs etc. and when trying to pass through with these objects, X-ray devices stop automatically and provide audible and visual alarm.

**ELECTRONIC  
SECURITY  
TECHNOLOGIES**

# WALK THROUGH METAL DETECTOR

Walk Through Metal Detectors provide audible and light warning by detecting the metals on people passing through according to its density. In this way, people are prevented from entering with threatening such as weapons and knives.

These detectors are mostly used to provide security in the areas where people enter and exit intensively such as airports, military organizations, public buildings, shopping centers, ports, exhibition centers, factories, business centers etc.

There are different types of walk through metal detectors. They can be classified according to their place of use such as Fixed Door Type Metal Detectors, Portable Door Type Metal Detectors or Outdoor Door Type Metal Detectors.

**ELECTRONIC  
SECURITY  
TECHNOLOGIES**

[adorel.com.tr](http://adorel.com.tr)



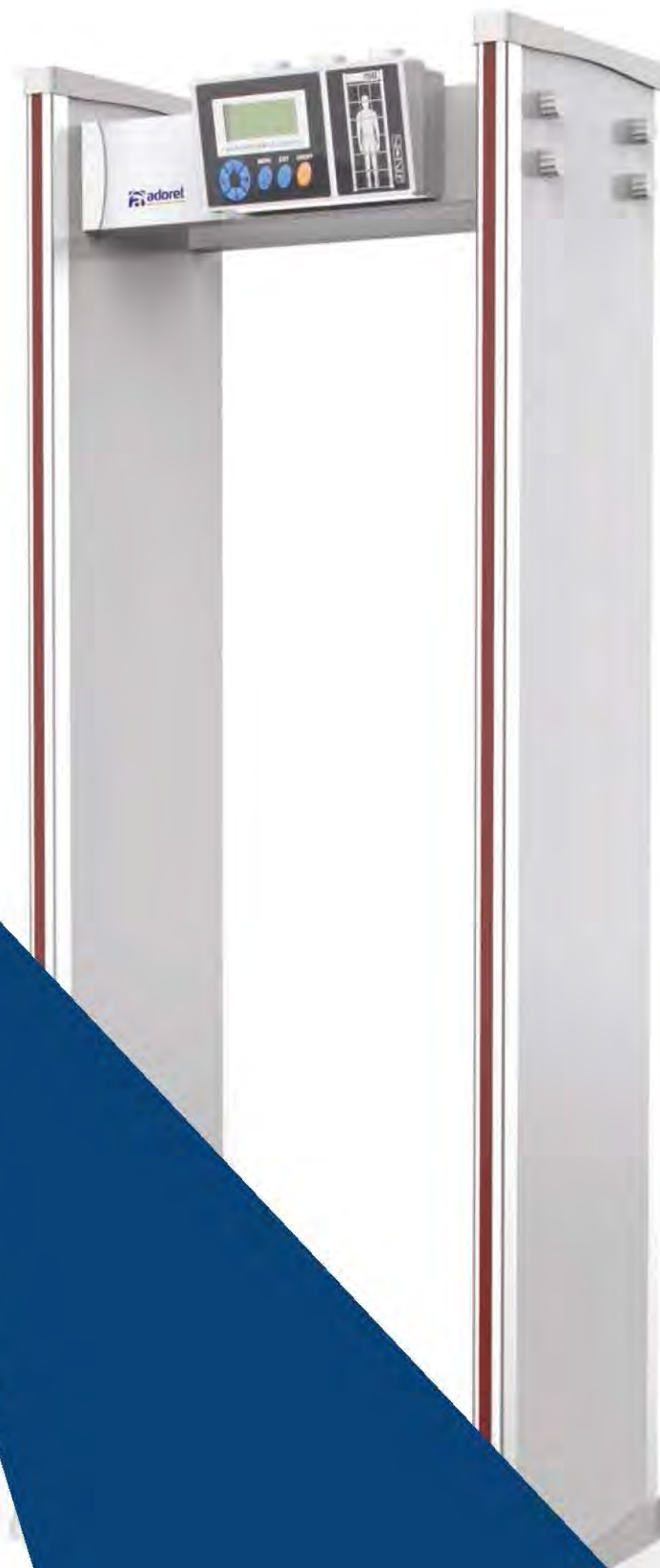


It is also possible to classify them by number of scan zones. There are walk through metal detectors with 4 zones, 6 zones, 18 zones, 24 zones or 33 zones.

Walk Through Metal Detectors imported by Adorel Information and Security Technologies Inc. are in a structure that will not harm human health and magnetic products. Pregnant women, children and cardiac pacemaker carriers can easily pass through.

Hand-held Metal Detectors also provide audible and light warning by detecting the metals on people according to its density.

Hand-held Metal Detectors are operated by battery and they are easy to carry and use.





# ACCESS CONTROL AND MONITORING SOLUTIONS

- :: **Fingerprint Control System**
- :: **Face Recognition Control System**
- :: **Barrier Access Control System**

Personnel Attendance Control System is an intelligent automation system which allows enterprises to record their employees' entry and exit times in detail, can reports, can payroll according to working hours, lunch breaks, overtime, holidays, paid / unpaid leave, can authenticate with fingerprint and face recognition control system, prevent leaks, limit visits and control with barrier and turnstile systems.

[adorel.com.tr](http://adorel.com.tr)

# FINGERPRINT CONTROL SYSTEM

Today, fingerprint systems are used extensively in many institutions and organizations. Fingerprint readers are mounted on turnstiles and doors and used for entrances and exits.

These systems are now in every aspect of our lives.

In recent years, card reader systems have been replaced by fingerprint systems also known as Biometric systems.



**ACCESS CONTROL  
AND MONITORING  
SOLUTIONS**

[adorel.com.tr](http://adorel.com.tr)

The main reason for this is the prevention of security weaknesses based on the circumstances like the lost card or malicious people give their cards to someone else to make use of in the card systems.

The fingerprint is personal and does not duplicate. Even each person's fingerprints are different from each other. You can also identify the 10 fingers of the contact to the system.

ADOREL Information and Security Technologies Inc. offers different solutions to businesses and consumers with its fingerprint technology in many products and markets. In our fingerprint solutions, products with maximum capacity and technical specifications are used.



# FACE RECOGNITION CONTROL SYSTEM

Face recognition system, provides a secure pass system by face and model extraction algorithm with its advanced optical technology. It can create three-dimensional drawings by combining with face model algorithm.

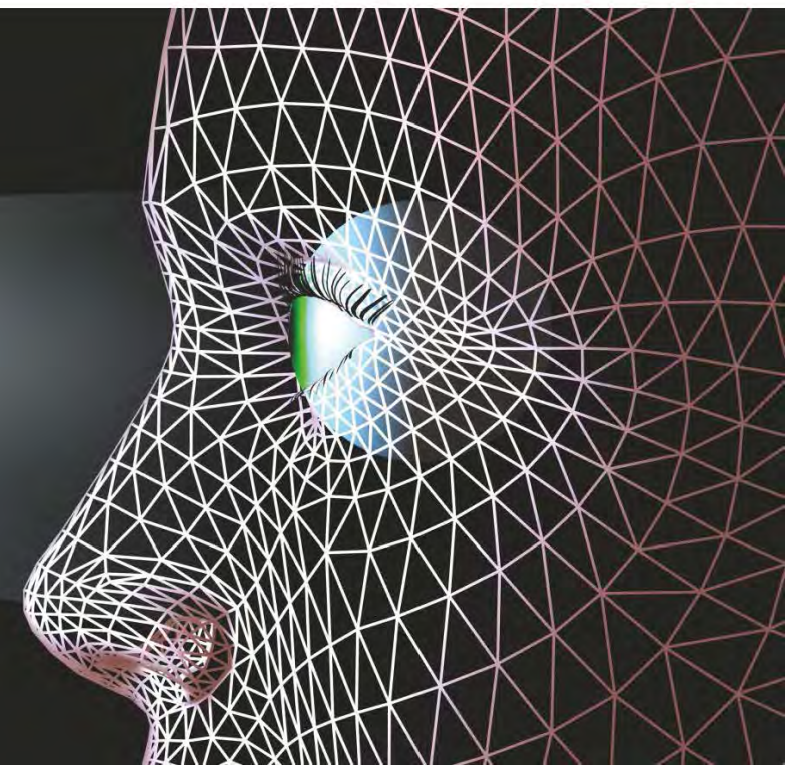
You can merge, match and compare with the installed systems. This system is less inaccurate.

Facial recognition systems are generally used in personnel attendance checks and entry-exit systems.



**ACCESS CONTROL  
AND MONITORING  
SOLUTIONS**

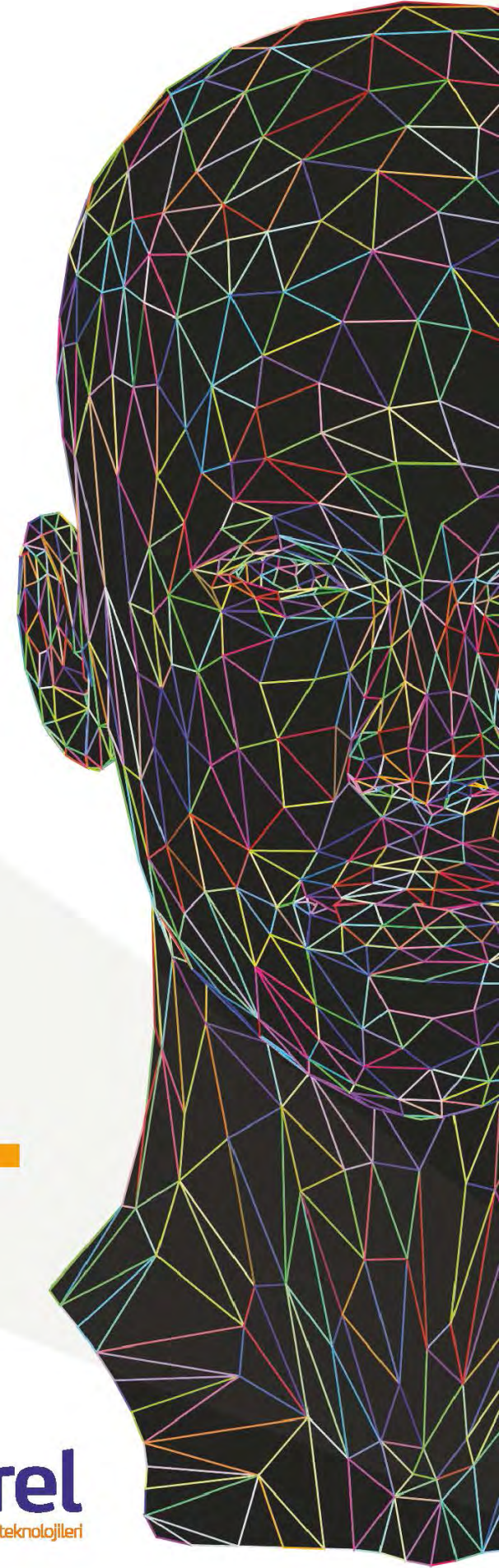
[adorel.com.tr](http://adorel.com.tr)



In the face recognition system, face recognition is performed first. The faces of the people are recorded in the system with high resolution cameras on the devices. ID number is also recorded.

The device allows to identify the registered faces by referring to specific points of the face and extracting the algorithm. The reference points taken when determining are features that belong only to the individual, such as fingerprints and will not be found in anybody else. In this way, it is impossible to enter and exit instead of others.

Our new face recognition systems now include both face recognition and fingerprint readers.



# BARRIER ACCESS CONTROL SYSTEM

All kind of barrier access solution is available from the narrow entrance barrier system must be opened quickly to inlets which up to 8 m.

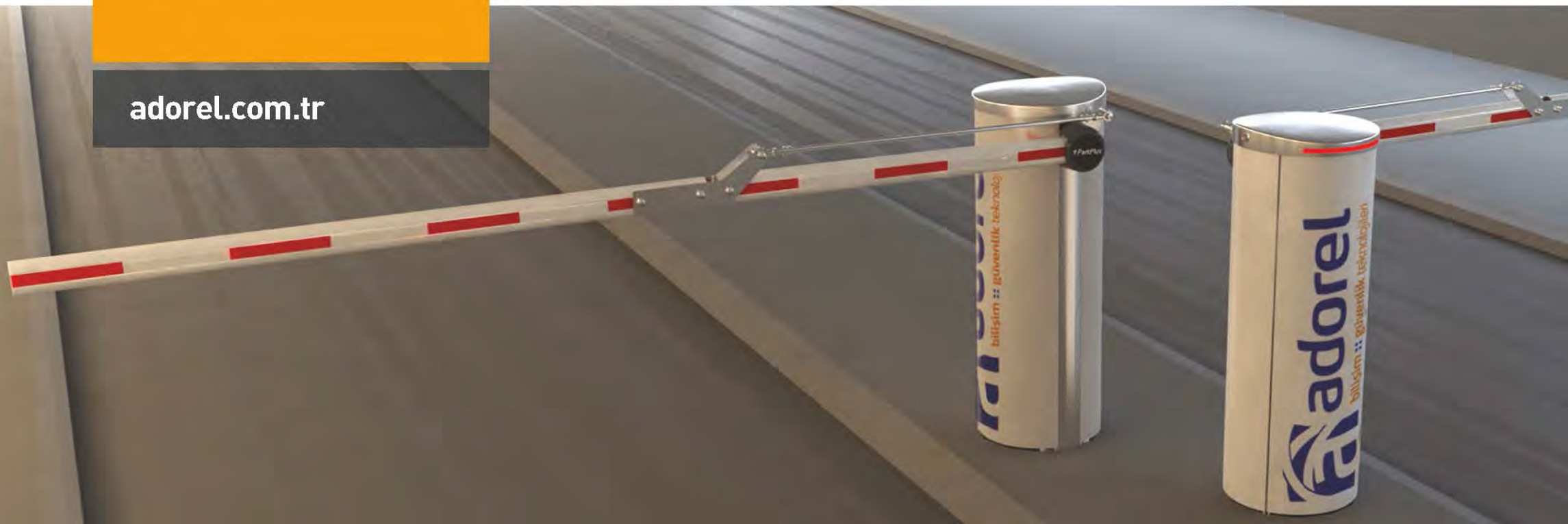
It is possible to meet every need with an independent control unit that varies according to the arm length, the end of the protection cabinet or the motor body.

In case of any interruption, additional batteries installed inside the engine ensure that the system operates in the same way.



ACCESS CONTROL  
AND MONITORING  
SOLUTIONS

[adorel.com.tr](http://adorel.com.tr)







Since the barrier systems are manufactured to work very frequently, they are used to provide safe and controlled passage in places where vehicle entry-exit density is high. It is equipped with the necessary accessories to maintain its functionality.

No special competence is required for the installation or maintenance of these systems.





# SOFTWARE SOLUTIONS

---

[adorel.com.tr](http://adorel.com.tr)

# SOFTWARE SOLUTIONS

It produces easy to use and detailed solutions suitable for smart systems by using the latest languages of technology in developing infrastructure and software suitable for every project needed with the help of professional software team.





```
m.createQuery(hql, Person.class);  
e")){  
values[0].toString());  
age")){  
Integer.valueOf(values[1]  
tlist());
```



The background features a collage of overlapping geometric shapes and symbols. A large, bold, black letter 'W' is visible in the upper left. A stylized atomic model with a central nucleus and orbiting electrons is in the lower left. A large, bold, black letter 'M' is in the lower center. A large, bold, black letter 'A' is in the lower right. The overall color palette is grayscale with some light beige tones.

*Referenc*



EMNİYET  
GENEL MÜDÜRLÜĞÜ



JANDARMA GENEL  
KOMUTANLIĞI



T.C. İÇİŞLERİ  
BAKANLIĞI



T.C. ADALET  
BAKANLIĞI



T.C. SAĞLIK  
BAKANLIĞI



TÜRK HAVA  
KUVVETLERİ



TÜRK KARA  
KUVVETLERİ



T.C. MERKEZ  
BANKASI



ALARKO



ENERJİSA



MERCEDES BENZ



NUROL



RÖNESANS ENERJİ



TURKCELL



TÜRKERLER



CENGİZ İNŞAAT



ZORLU HOLDİNG



SANKO



ÖZDOĞAN GRUP



KALEN ENERJİ



[www.adorel.com.tr](http://www.adorel.com.tr)



**ADOREL**  
GÜVENLİK SİSTEMLERİ  
BİLG. İLET. TURZ. İNŞ. TAAH.  
TİC. SAN. LTD. ŞTİ.

**TÜRKİYE / Ankara**

Mustafa Kemal Mah. 2139. Cad. No:11  
Çankaya / ANKARA, TÜRKİYE  
T: +90 (0.312) 472 4 472  
F: +90 (0.312) 472 25 06

[ankara@adorel.com.tr](mailto:ankara@adorel.com.tr)

**TÜRKİYE / Erzurum**

Atatürk Üniversitesi Yerleşkesi  
Teknoloji Geliştirme Bölgesi  
A Blok 130 / 131 / 132  
ERZURUM, TÜRKİYE  
T: +90 (0.442) 214 02 02

[adorel@adorel.com.tr](mailto:adorel@adorel.com.tr)

**GERMANY**

Bergisch Gladbacher  
Strasse 1033 51069  
KÖLN / GERMANY

[koln.adorel@adorel.com.tr](mailto:koln.adorel@adorel.com.tr)

contact